

IGLUNA

Space habitat & Remote operations

Sponsoring Brochure





- A **collaborative** project gathering university **student teams from all around the world**
- An **interdisciplinary** platform to demonstrate **space technologies**
- An **opportunity** for the students to get support from **academia, industry, research organisations and space agencies** for their projects
- An **ESA_Lab@CH** project

Goals

- To showcase and test **innovative technologies** towards **commercial applications**
- To demonstrate how to **sustain life** in an extreme environment
- To **inspire** and educate the next generation of space experts
- To provide a platform for university students to **enter the space sector**

An ESA_Lab@ initiative

- **Hub** for disruptive innovation between universities, research organisations and industry
- A joint initiative supported by ESA via open data access policy and expertise
- Institutional link creating a **wide network** of ESA_Labs@s all over Europe

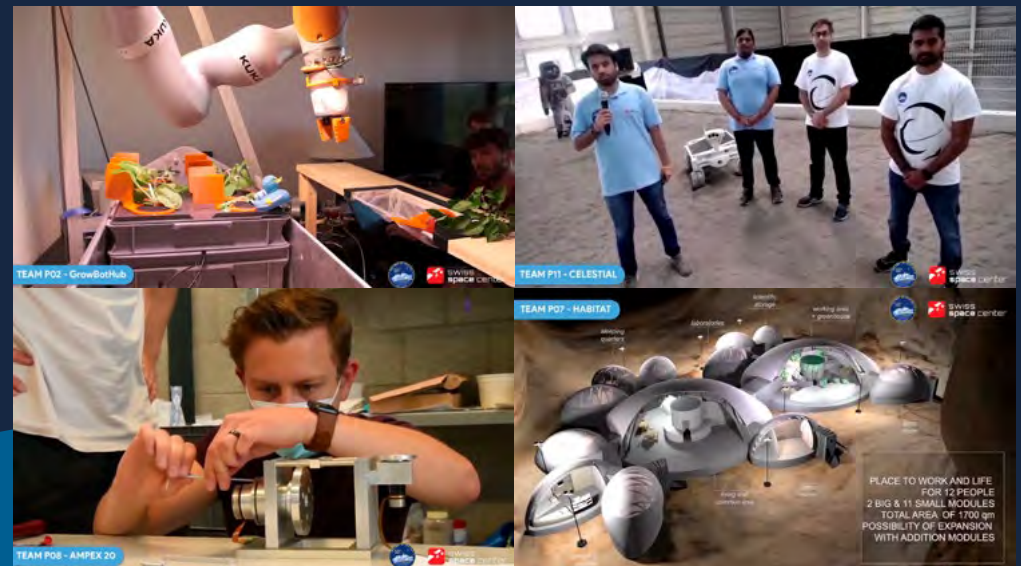
“We as ESA are very interested in all these technologies and ideas developed in IGLUNA. I really like this international dimension of IGLUNA, which is a value that I really support.”

*Jan Wörner,
ESA Director General*



Field Campaign

- Final step of a one-year work on innovative space technologies
- 9 days of tests and demonstrations in an extreme environment
- 2019: In the Klein Matterhorn Glacier (Zermatt, Switzerland)
- 2020: Virtual edition
- 2021: On the Mount Pilatus and at the Verkehrshaus (Lucerne, Switzerland)



Benefit

- Share your participation in IGLUNA's success
- Be part of our events and make an impact to our participants and visitors



Access

- Our network of worldwide partners, universities and experts
- The project's technologies shaping our future on Earth and beyond
- Talented and skilled students to join your team

Gain visibility

- International and national outreach
- Diverse online platforms
- Media coverage
- Printed content at our events

Become a sponsor

- Support IGLUNA with **financial support, access to infrastructure, material or services**
- Be part of the **adventure** and benefit from various **advantages**
- Access our **network** of partners and experts
- Get to know the **next generation** of space experts and attract the **new talents**
- Discover **cutting-edge technologies** for Earth and Space
- Increase your **visibility** thanks to our international and diverse **public outreach**
- Benefit from our identity as an **ESA_Lab@** and established platform
- Chose the **package** that suits your organization the best
- Contact us in order to get a **customized** package to fit your expectations



Packages

	Platinum	Gold	Silver
Logo on our sponsoring webpage	◆ + IGLUNA homepage	◆	◆
Logo on the Field Campaign brochure and sponsors banner	◆	◆	◆
Access to our network of partners, universities and experts	◆	◆	Limited
Presentation on our social media channels	◆	◆	Limited
Use of scientific and technology information as well as your participation in IGLUNA for marketing purposes	◆	◆	
Logo in IGLUNA videos	◆	◆	
Organise events during the Field Campaign	◆	◆	
Place personalized banners during the Field Campaign	◆	◆	
Logo on internal and external presentations all over the year	◆	Limited	Limited
Access to the Field Campaign locations	◆	Limited	Limited
Logo on the Field Campaign roll-up and info walls	◆	Limited	Limited
Mention in our media communications and newsletter	◆	Limited	
Logo on the IGLUNA roll-up for events all over the year	◆		
Logo on the Field Campaign Poster	◆		
Logo on the Field Campaign Flyer	◆		

Let's collaborate!



igluna@spacecenter.ch
www.spacecenter.ch/igluna



Igniting Innovation



Powered by



Schweizerische Eidgenossenschaft
Confédération suisse
Confederazione Svizzera
Confederaziun svizra

Swiss Confederation

Federal Department of Economic Affairs,
Education and Research EAER
**State Secretariat for Education,
Research and Innovation SERI**
Swiss Space Office